

Results for the individual phases of the product life cycle



Materials used:

- **Basis** weighs approximately 6,9 kg.
- Over 50 % of all the materials used are recycled. It contains no hazardous substances (no PVC, chrome VI, lead or mercury).
- The fact that all expendable parts can simply be replaced greatly increases the life cycle of the product.
- Option: Breathable foams (PU), which are CFC and CHC free, are used.
- The packaging consists of cardboard which is manufactured using recycled material and PE film (polyethylene film) which contains approximately 30 % recycled material.
- Water-soluble inks which contain no solvents are used when printing paper and packaging materials.



Production and waste management:

- The company's environmental management system is certified to EMAS and to DIN EN ISO 14001:2005. The fact that the company undergoes regular auditing ensures environmentally-friendly production.
- Waste resulting from production is separated for recycling purposes as far as possible.
- Mixed waste passes through a sorting system. This ensures that the largest possible quantity of waste can be recycled.
- **Basis** was developed in such a way as to minimise waste, energy consumption and environmental impact during manufacture.
- The powder coatings used are free from volatile, organic compounds and heavy metals.



Transportation:

- The fact that the company has its own fleet of heavy goods vehicles means that it can avoid running vehicles when empty when its products are delivered. This is achieved by visiting suppliers on return journeys in order to transport new component assemblies for the next production run.
- Chairs are manufactured in the vicinity of customers in order to reduce transportation costs: the company operates nine production sites in Europe, North America and South Africa.



Using the product:

- No environmentally-damaging effects occur while the product is being used.
- Changeable upholstery and cushions are used in order to increase the product life cycle.
- All components can simply be replaced and some of them can be retrofitted.
- Care and servicing instructions are included in the user manual.



The end of the product life cycle:

- **Basis** can be dismantled in approximately five minutes using conventional tools.
- All individual parts weighing more than 50 g are marked and are therefore 100 % recyclable.
- The cardboard packaging and PE film used in the packaging are recyclable.
- The manufacturer ensures that the packaging materials are recycled in the correct manner.



Part of our system of values

Inspired by the unspoiled environment around Offenhausen, the location of our headquarters, we attach great importance to preserving nature. Environmental care and the need for sustainability as a management responsibility are consistently put into practice in the areas of sales, development, manufacturing and service. In recognition of this fact, we are certified in accordance with DIN EN ISO 14001. The way in which we accurately observe and document the raw materials and energy supplied to our company, the types and amounts of waste and waste water produced, air emissions and energy consumption in all areas is fundamental to our environmentally friendly company management. Thanks to these analyses, we can make comparisons and take specific action against any environmental pollution at any time. Alongside these operational measures, we are also minimising possible environmental pollution owing to our products from the development and production stages through to the waste-disposal stage. Thanks to the modular construction of our range of products, we have been able to ensure that raw materials are used optimally. Our meticulous quality assurance procedures ensure that our products last a long time. As a result, the greatest contribution towards protecting the environment is made – easing the burden on the environment tremendously! Our objective is to solve or avoid possible environmental problems through our own actions and by promoting sustainable consumption and future-oriented lifestyles. The management and employees at the Dauphin HumanDesign® Group live and work with an awareness of the need to make continuous improvements and, by doing so, to contribute in the medium and long term towards preserving our basis for existence.

Description of materials

The following details are approximate values and may vary depending on the specification of the model in question.

Metal	kg	%	Plastic	kg	%	Additional materials	kg	%
Steel	3,54	51,0	Polyamide (PA)	0,01	0,2	Wood	2,16	31,1
			Polyurethane (PU)	1,09	15,7	PE (for packaging)	0,14	2,0



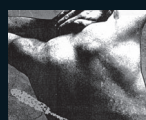
The importance which the company philosophy attaches to protecting the environment was made clear back in 2003 when the company set up an environmental management system in accordance with DIN EN ISO 14001. The aim of this system is to reduce the company's impact on the environment. By joining the Umweltpakt Bayern (Bavarian Environmental Pact) in 2007, Dauphin is looking to set an example by working together with other companies in Bavaria and going above and beyond the legal requirements in order to avoid damaging the environment in the future.

Other certificates



Contact

umwelt@dauphin.de



DAUPHIN
HumanDesign® Company